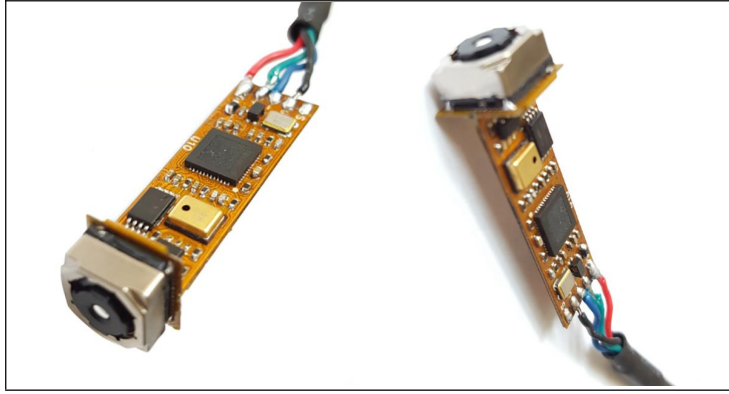


8MP USB2.0 Camera Module Datasheet



1. Main Parameters

Product Name	8MP USB2.0 Camera Module
Product Code	WN-L1910.K91R V2.0
Module Size	35.45*10mm
Image Sensor	1/3.2-inch IMX179 CMOS Sensor
Max. Resolution	3264 H x 2448 V
Pixel Size	1.4*1.4 μ m
Output Format	MJPEG, YUY2
Field of View	75°
Lens	EFL: 3.79mm, F.NO: 2.0, 5GIP+IR 650nm
Audio Input	Digital Microphone
Focus Mode	Autofocus
Shutter Mode	Electronic Rolling Shutter
Dynamic Range	Up to 72.5dB
Output & Power Supply	High Speed USB2.0
Interface	5PIN Welding Spots
Controllable Parameters	Brightness, Contrast, Saturation, Hue, Sharpness, Gamma, White Balance, Backlight Contrast, Exposure
Supported OS	UVC-compliant, Plug and Play for Windows, Android, Linux, Mac OS, etc.
Connection Cable	Default 1.0 Meter USB Cable

2. Supported Resolutions and Frame Rates

Formats	Resolutions	Frame Rates
MJPEG	3264x2448 (8MP)	15FPS
	2592x1944 (5MP)	15FPS
	2048x1536 (2K)	15FPS
	1920x1080 (1080P)	30FPS
	1600x1200 (UXGA)	30FPS
	1280x720 (720P)	30FPS
	800x600 (WVGA)	30FPS
	640x480 (VGA)	30FPS
YUY2	3264x2448 (8MP)	15FPS
	2592x1944 (5MP)	15FPS
	1920x1080 (1080P)	30FPS
	1600x1200 (UXGA)	30FPS
	640x480 (VGA)	30FPS

3. PIN Definitions

Pin No.	Signal Names	Descriptions
1	VCC	DC 5V
2	DM	USB2.0 Data-
3	DP	USB2.0 Data+
4	GND	Ground
5	S	Shot

4. Working Conditions

Working Voltage	DC 5V
Working Current	110mA
Working Temperature	-20°C ~ 60°C
Storage Temperature	-20°C ~ 85°C
Humidity	80 ~85%

5. Shape and Dimensions (Unit: mm)

