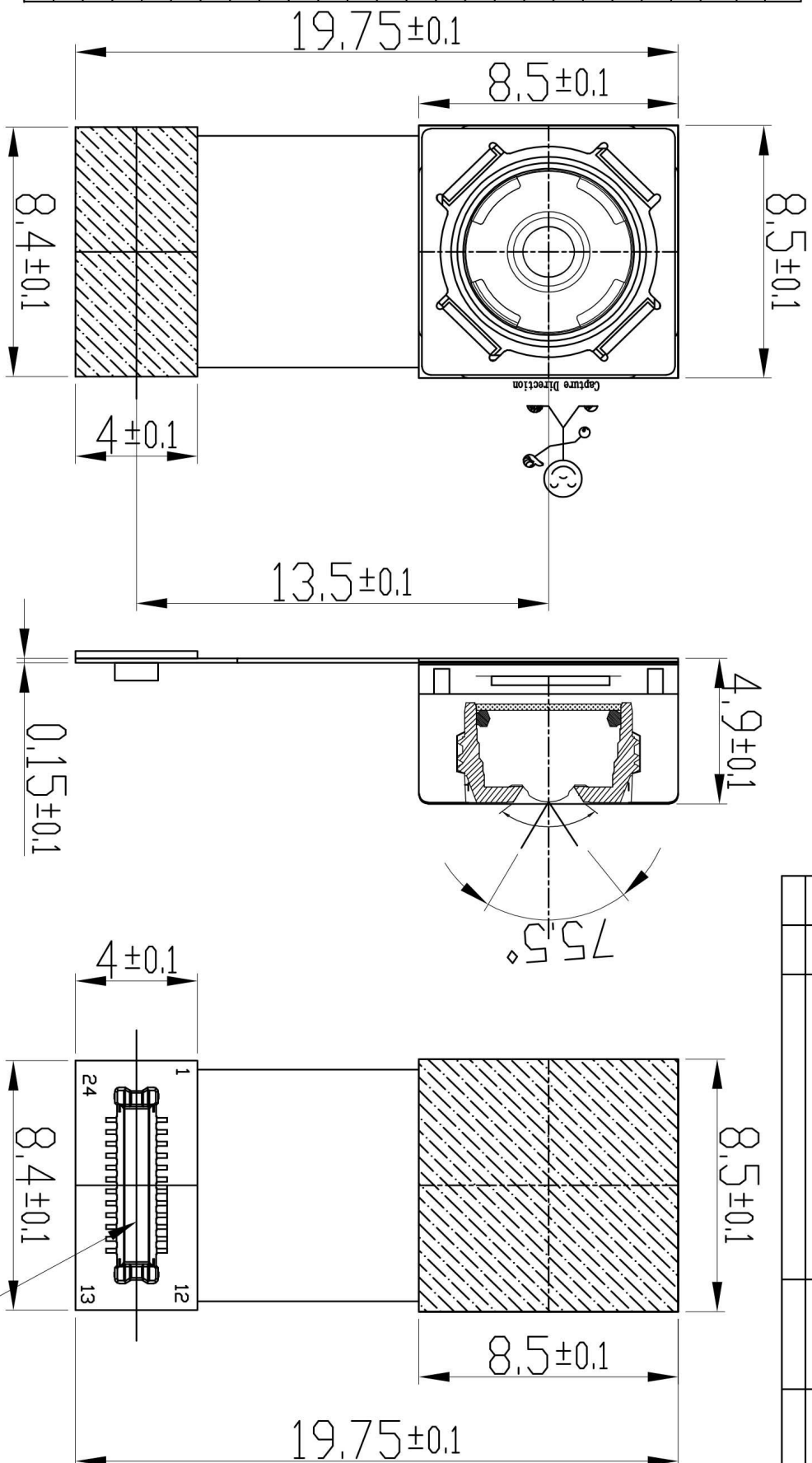


ROHS

5648

REVISIONS		Date	Drawn	Approved
Mark	REV.	Description		
Δ				

客户PIN定义	
NO.	SYMBOL
1	GND
2	AFVDD
3	SDA
4	SCL
5	GND
6	MCN
7	MCP
8	NO
9	PO
10	NI
11	P1
12	NC
13	GND
14	AVDD
15	GND
16	NC
17	MCLK
18	GND
19	REST
20	PWDN
21	NC
22	DDVDD
23	NC
24	GND



DK21M024

注: 1. 带“*”表示尺寸为重点尺寸, CPK ≥ 1.33
 2. 模组接口: MIPI

LENS Spec		Sensor Spec		VCM		Others Spec	
Lens	V841	Sensor	DV5648	Driver IC	FP5510		
COM.	4 ELEMENTS	Sensor size	1/4"				
EFL	2.94	ID 电源 (DDVDD)	1.7V-3.0V				
F/NO.	2.2	模拟电源 (AVDD)	2.6V-3.0V				
FDOV	75.5°	CORE 电源 (DVDD)	1.35V-1.65V				
MAX IMA	148	FDC. Range	0.27M-33M				
解析度		模组规格					

Zhuhai Winideatech Co., Ltd.

公差		CUS. Name:		CUS. No:	
x	±0.1	Prepared:	Arlandq	Date	2021.4.30
.x	±0.1	Checked:		Date	
.xx	±0.05	Approved:		Date	
.xxx	±0.005				
Angle	±0.5°				

WN-2089DV5648	Unit:	NM
Scale:	1:1	Unit:
Third Angle		Angle
A4		